

Bicolor Rear Mount LED Indicator

ML 1634

FEATURES

- Multiple Status Indication within a Single Package
- Performs in Severe Environments
- Colors: Red/Green, Yellow/Green
- Rugged Construction
- Panel Mounted
- Optional EMI Screen
- Diffused LED lens
- Decorative bezel



communications
Electrodynamics, Inc.

Designed for use as function indicators on aircraft, test equipment, machine tools and wherever severe environmental conditions need to be met, especially vibration and EMI.

ENVIRONMENTAL SPECIFICATIONS

Vibration: .06" D.A. or 20G Peak, whichever is less, 10 Hz to 2 kHz, MIL STD 202, Method 204, Test Condition D.

Shock: 100 G's MIL STD 202, Method 213, Test Condition I.

Humidity: MIL STD 202, Method 106.

Altitude: 100,000 ft., MIL STD 202, Method 105, Test Condition D.

Reliability: Operational 6 X 10⁶ hours min. MTBF @ 25°C.

Salt Spray: MIL STD 202, Method 101, Test Condition B.

MECHANICAL SPECIFICATIONS

Case: Aluminum, with clear chromate finish.

Mounting: Rear panel by 5/16-32" nut and lockwasher.

Seal: Environmentally sealed. Added front panel Fluorosilicone O-ring

Window: Glass

Panel Thickness: 0.118" max.

ELECTRO-OPTICAL CHARACTERISTIC SPECIFICATIONS

Absolute Maximum Ratings @ T_{ambient} = 25° C.

ML 1634

Colors	Red/Green	Yellow/Green
Forward Voltage (VDC)	2.8	2.8
DC Forward Current (mA)	30/25	30/25
Reverse Voltage (VDC) @ I _R = 100 μA	5	5
Power Dissipation (mW)	105	105
Luminous Intensity (mcd) typ @ I _F = 20 mA	8	8
Peak Wave Length (nm) typical	635/565	635/565
Viewing Angle (2 Ø ^{1/2})	60°	60°
Operating Temperature (°C)	-40 to +85	-40 to +85
Storage Temperature (°C)	-55 to +100	-55 to +100
Lead Soldering Temperature	260 °C for 3 seconds	

Red: Derate linearly from 50°C at 0.5 mA/°C

Green: Derate linearly from 50°C at 0.5 mA/°C

ORDERING INFORMATION

When ordering, show basic part number first, then EMI screen, LED color, lens type, terminal style and voltage. If this is a special part, the factory assigned modification number will be added at the end of the ordering number.

Example: Basic model with an EMI screen, with a red/green LED, a diffused lens, straight terminals and 24 volt internal resistor would be an ML 1634 E-R/G-D-ST

ML 1634 E- R/G - D -ST - S ()

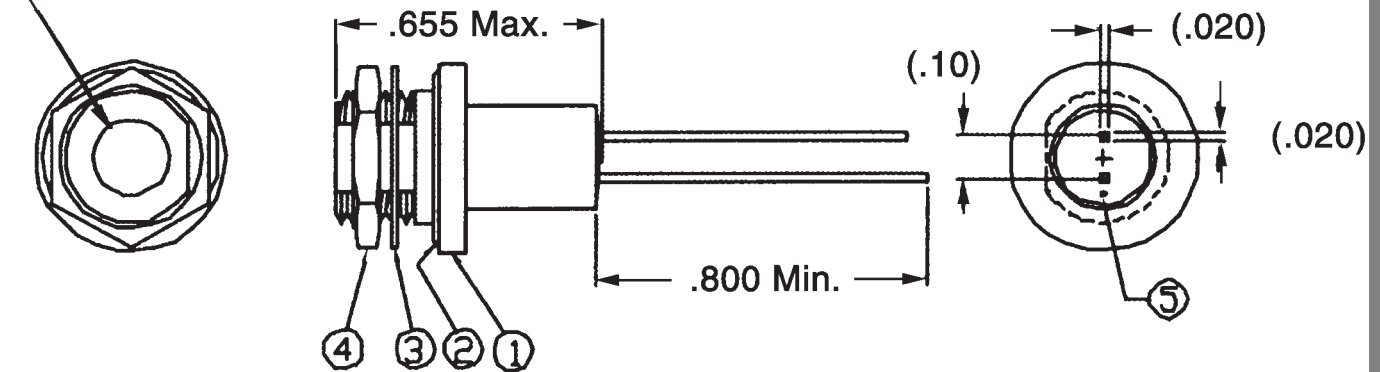
Basic Model Number	EMI Screen	LED. Color	Lens Type	Terminal Style	Factory Modification Number if Special
ML 1634	() None E Screen	R/G Red/Green Y/G Yellow/Green	ND Non-Diffused D Diffused	ST Straight Lead LT Loop terminals	S+ ID No.

Bicolor Rear Mount LED Indicator

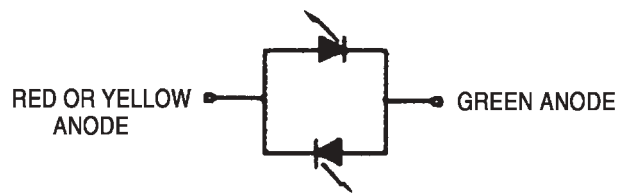
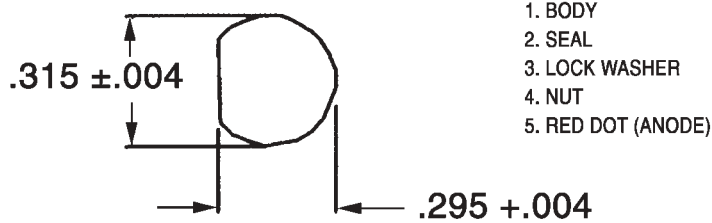
ML 1634



.182 DIA Display Area



LED INDICATORS



SCHEMATIC

MOUNTING HOLE DETAIL

NOTE:

Dimensions in () are mm. Tolerances: Decimals: ± .010 (0,25) Fractions: ± 1/64 Mounting Torque: 5-7 in. lbs.
L-3 Communications / ElectroDynamics • 1200 Hicks Road • Rolling Meadows, IL 60008 • Tel: 847.660-1750 • Fax: 847.660-1751 • email: edi.info@L-3com.com • www.L-3com.com/edi